



Mobile Device Management for secure monitoring of all devices

Install just one agent, one time, forever: zero manual configuration

Install just a single agent only once per host to begin collecting all relevant metrics: Install it and forget it - we take care of everything.

Record and Traffic Important Actions and Spot every application issue, on the spot.

To make any technology aided learning efficient, various windows s android-based devices are getting used. Now it also becomes very important to track those devices to understand their usage, health, efficiency and also maintain proper grievance in case of any problem.

MDM is the one stop solution for maintaining, tracking and providing every smart device and ensure preventive measures for better outcome.

Features

Manage installation of Devices in various institution

Track the usage of Windows & Android devices through agent installed in devices

Real time tracking and health checkup of devices: State, District & Institution wise

Provide real time alert on devices need attention: State District & Institution wise

Track working hour and non-working hour usage of devices



Track the software or applications getting used in the devices.

Monitor blacklist of software or applications getting used in the devices.

Ticking system with grievance tracking of service provides

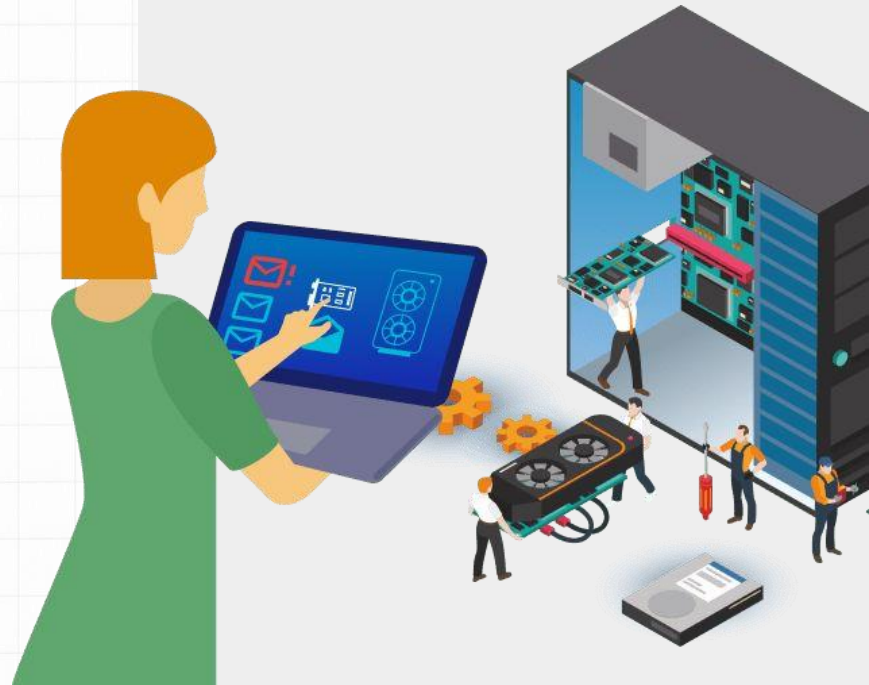
Manage various level of users, their roles and actions

Work in both online and off-line and Sync while connect to Internet.

Features:

Hardware Installation Track

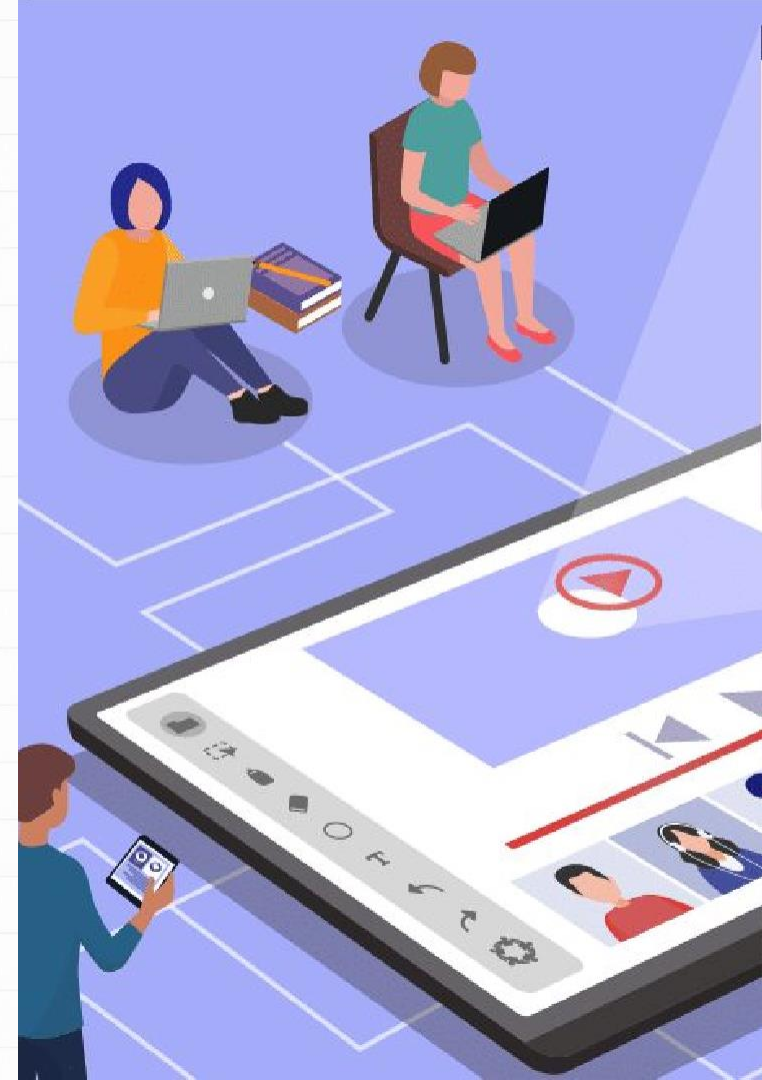
- Tracking of number of hardware to be provided or supplied in a project and institution with type and make and supplier details.
- Details of hardware supplied and installation certificate received from institutes.
- Creating various slots of installation vs. actual installation
- Project wise details report of hardware assigned, handover, tracking application installed district, institute and hardware type wise
- Details report hardware supplied for supplier of various project.
- Monitoring and hardware supplied in real time basis.



Features:

Hardware Tracking

- Configuration of various hardware type and make
- Configuration of software to track and blacklist
- Real time tracking of windows and android based hardware with details of running status during working hour and non-working hours
- Real time usage of software in working hour and non-working hours
- Alert in blacklist software
- Attention of hardware not getting used project, district and institute wise.
- Attention of hardware getting used in non-working hour.
- Maximum and minimum used software in daily, monthly and yearly basic.
- Download of important reports in excel.



Features:

Auto Update of Boot Loader

**Logo and animation will
be uploaded in web.**

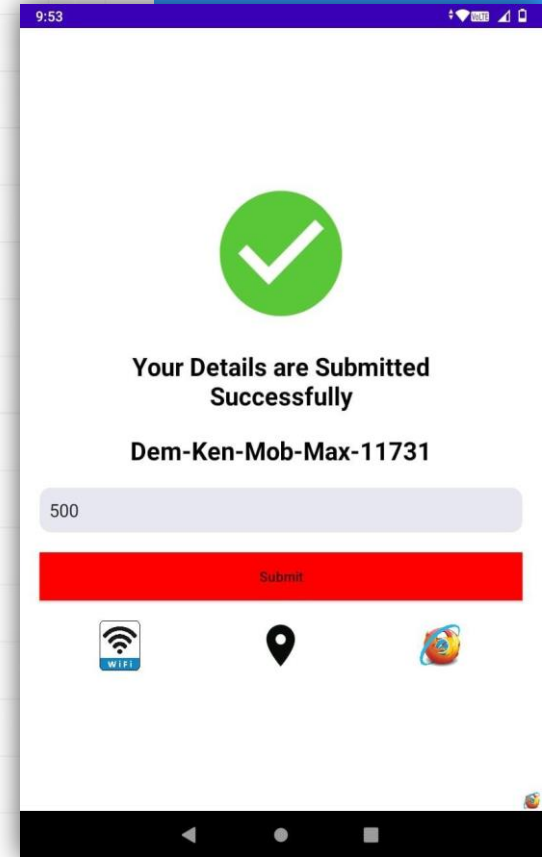
**While will be shared while
installation and also later.**

**Copy them in local
android device.**

Features:

Geo Fencing

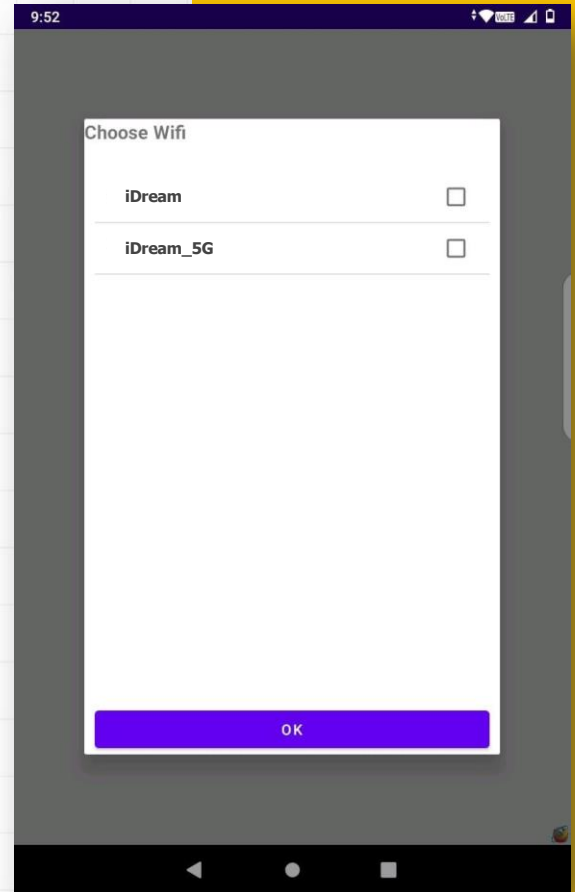
- Location of every institute will be added automatically which adding the institute and address. This will be considered as center coordinate of the institute.
- Time interval to share data will be configuration in project.
- Geo Fence length will be configured in project (Ex 100 m)
All android device will share location as per the configured time interval.
- If the shared location is outside the Geo Fence it will generate alert with date and time of the occurrence.
- Reports will be generated Project, District, Institute wise in Daily, Monthly and Yearly format



Features:

WI-FI Fencing

- Institute wise can configure multiple Wi-Fi details.
- Time interval to share data will be configuration in project.
- Agent will share the device corrected Wi-Fi details as per the time interval configured.
- If the Wi-Fi details of the device does not match the institute configured Wi-Fi, then alert will be generated.
- Reports will be generated Project, District, Institute wise in Daily, Monthly and Yearly format.



Features:

Website Blocking

- List of website category (as mentioned in Google business) will be added in project which are blacklisted.
- List of websites will be added in project which are blacklisted.
- List of keywords will be listed which will be blacklisted.
- If any blacklisted website is opened, alert will be generated and will be shown in reports.
- Reports will be generated Project, District, Institute wise in Daily, Monthly and Yearly format with details of all the blacklisted opened in various devices

KENDRIYA VIDYALAYA - WRONG WIFI ATTEMPT LOG DETAILS

Project	Demo Project	District	Sant Kabir Nagar		
Institute	Kendriya Vidyalaya	Year/Month	August,2023		
#	Device Serial #	Device Type	Device Make	Wifi Address	Time Stamp
1	Dem-Ken-Mob-Max-11731	Mobile	Samsung	"Dream_SG"	2023-08-22 15:12:50
2	Dem-Ken-Mob-Max-11731	Mobile	Samsung	"Dream_SG"	2023-08-23 15:00:10
3	Dem-Ken-Mob-Max-11731	Mobile	Samsung		2023-08-23 15:07:15
4	Dem-Ken-Mob-Max-11731	Mobile	Samsung		2023-08-23 15:08:16
5	Dem-Ken-Mob-Max-11731	Mobile	Samsung		2023-08-23 15:11:17
6	Dem-Ken-Mob-Max-11731	Mobile	Samsung		2023-08-23 15:12:21
7	Dem-Ken-Mob-Max-11731	Mobile	Samsung		2023-08-23 15:13:22
8	Dem-Ken-Mob-Max-11731	Mobile	Samsung		2023-08-23 15:14:22
9	Dem-Ken-Mob-Max-11731	Mobile	Samsung		2023-08-23 15:19:44
10	Dem-Ken-Mob-Max-11731	Mobile	Samsung		2023-08-23 15:32:21
11	Dem-Ken-Mob-Max-11731	Mobile	Samsung		2023-08-23 16:18:48

WRONG LOCATION DEVICE ACCESS DATE WISE

Project	Demo Project	District	Sant Kabir Nagar		
Institute	Kendriya Vidyalaya	Year/Month	August,		
Device Serial Number	Dem-Ken-Mob-Max-11731	Type/Make	Mobile/Samsung		
#	Time	Wrong Longitude	Wrong Latitude	Distance From Center	Map
2023-08-24					
1	15:36:09	77.4760333	28.617067	4699	Get Direction
2	15:38:09	77.4165856	28.6011612	1454	Get Direction
3	15:40:13	77.4165856	28.6011612	1454	Get Direction
4	15:40:13	77.4165856	28.6011612	1454	Get Direction
5	15:44:16	77.4165856	28.6011612	1454	Get Direction
6	15:44:16	77.4165856	28.6011612	1454	Get Direction
7	15:47:19	77.4165856	28.6011612	1454	Get Direction
8	15:47:19	77.4165856	28.6011612	1454	Get Direction
9	15:50:22	77.4165856	28.6011612	1454	Get Direction

Features:

Time Fencing with Working & Non-Working Hour Tracking

- Working hour will be configured in Project.
- Any device is used after working hour will generate alert.
- Reports will be generated Project, District, Institute wise in Daily, Monthly and Yearly format with details of working and non-working hour.

Features: Hardware Grievance



- Configuration of various service provider for hardware grievance
- Reporting any hardware issue by institute by opening a ticket
- Details of ticket raised by institute to service provider with alert
- Tracking of service provided by service provider and resolving or closing any ticket
- Details report of issues raised based on project, district and institute
- Details report of issues raised based on hardware type, make
- Details report of issues raised based on service provider
- Alert on tickets opened for long or based on priority
- Track on quality of service-by-service provider by resolution time
- Download of important reports in excel.

Various Users

Manage all configuration and maintain various projects

Master

Manage any specific project

Project Manager

Manage specific roles under any project

Project Supervisor

Location wise: Managing specific district or multiple districts
Functionality wise: Managing health or inventory or grievance

Institution Manager

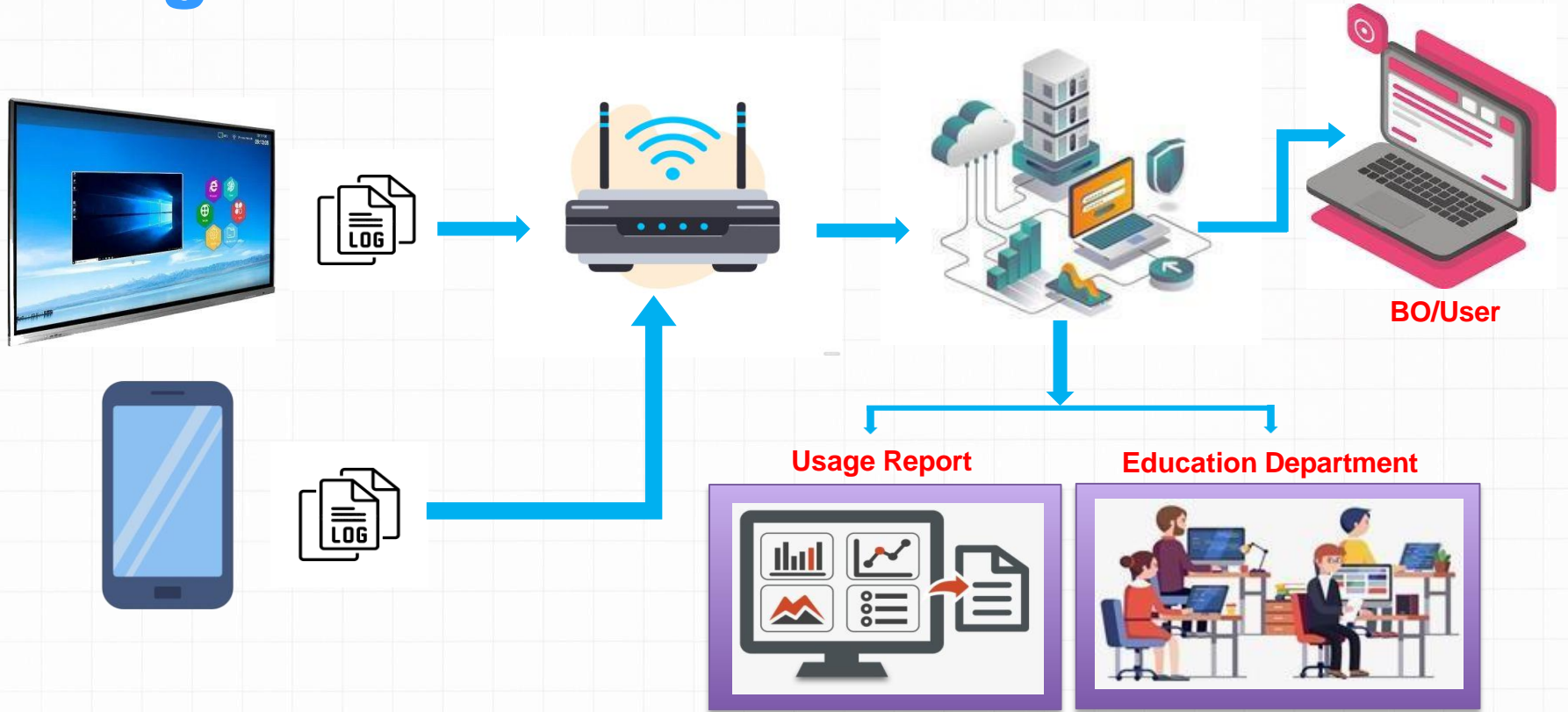
Manage any specific institutions

Service Provider

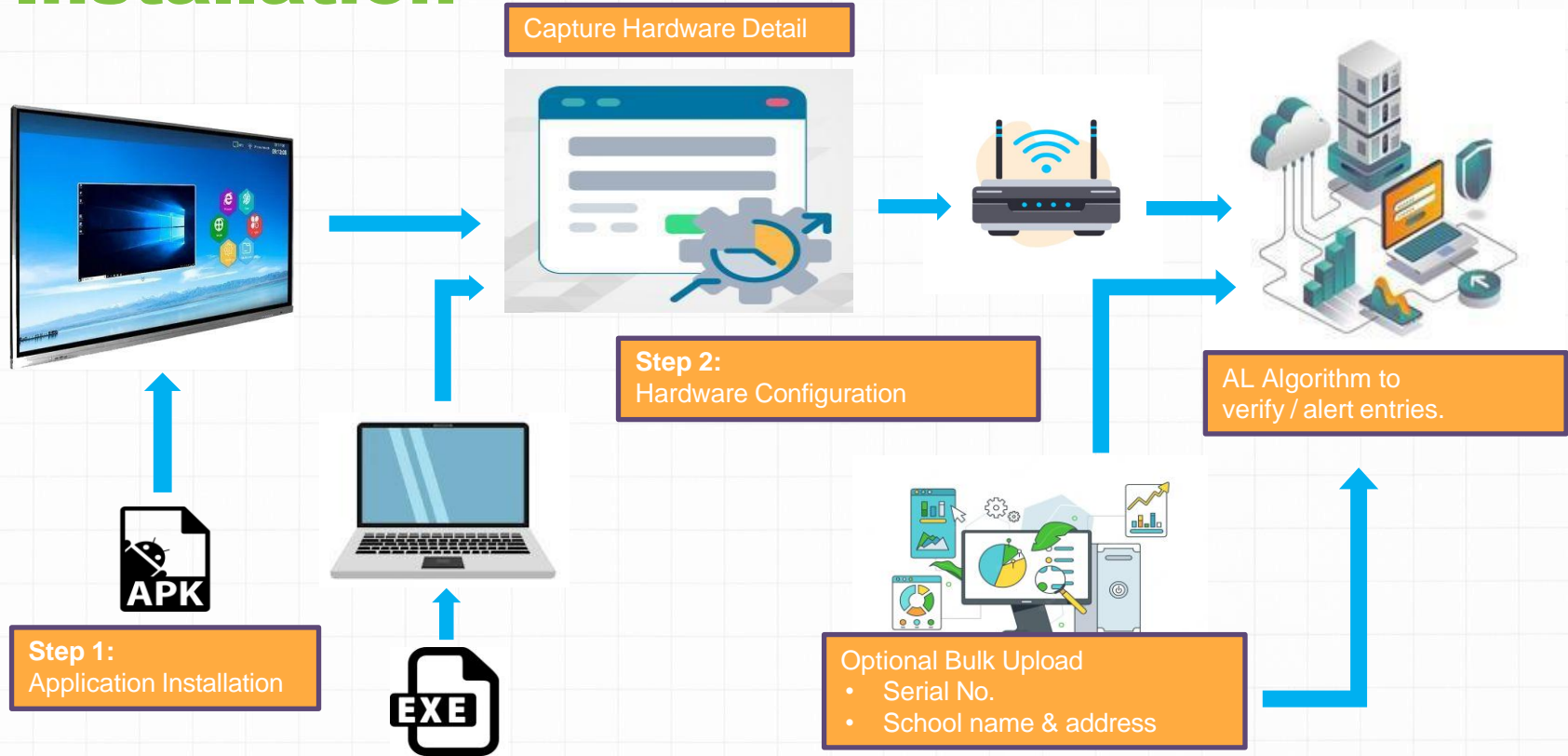
There can be two kindly of service providers:

Installation: Supply & install of HW and SW in Institutes
Servicing: Handle service-related issues reported by institute on any hardware and maintain SLA in grievance

Usage



Installation



Thank You